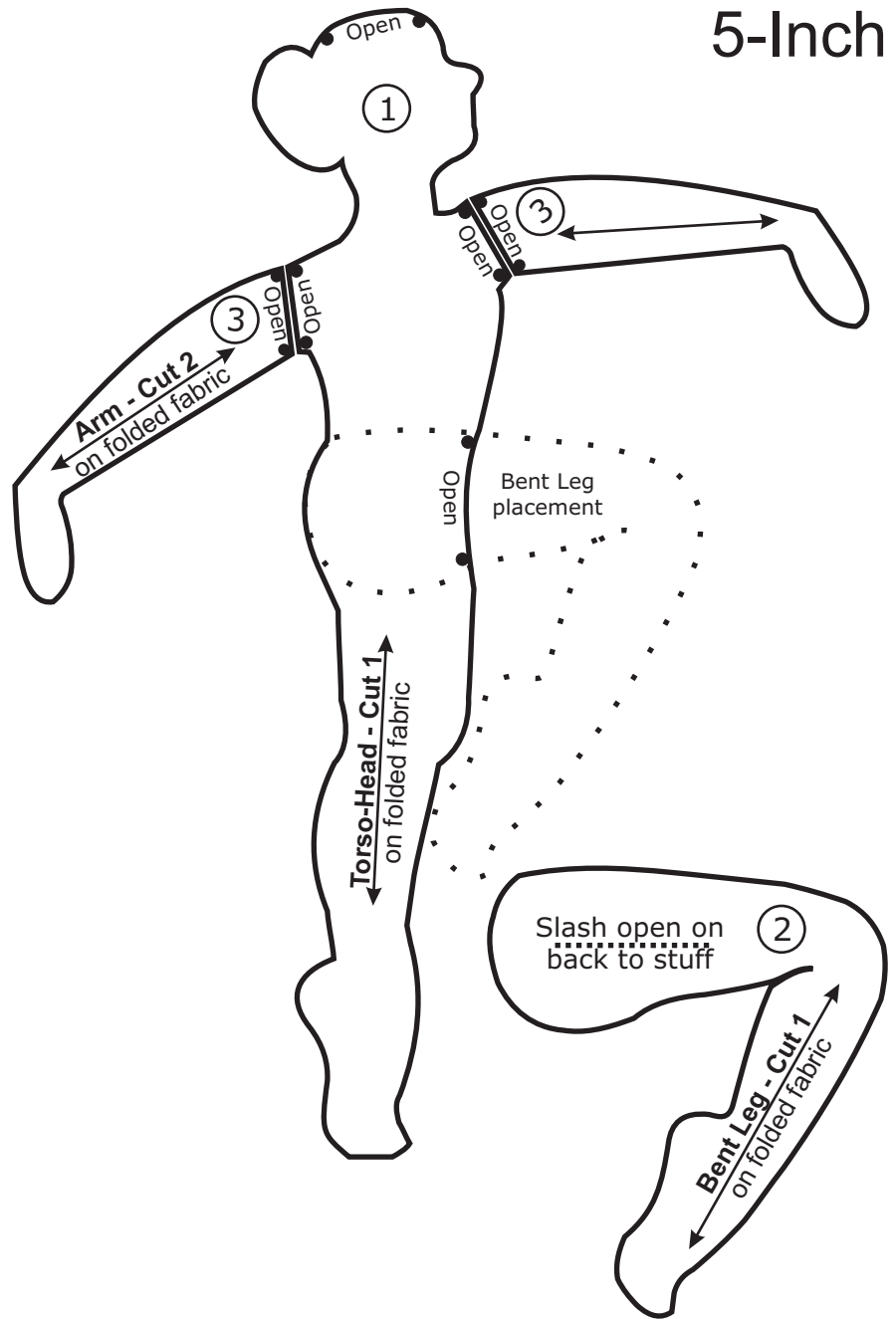




Mimi's

Dancin' Pin-Doll

5-Inch



Supplies

- 1/4 yard of fabric (your choice, I use muslin).
- 4 pipe cleaners from smoke shop (not chenille stems).
- 1 large safety pin.

Pattern Pieces

Trace all pieces on doubled doll fabric. Stitch before cutting.

1 Torso/Head and standing leg. Cut 1.

2 Bent leg. Cut 1

3 Arms Cut 2.

Stuff Torso

Fold 3/4" of a pipe cleaner and put into torso and down into leg with the fold in the toe. Stuff torso through leg, arm, and head openings keeping pipe cleaner in the center..

Ladder stitch leg opening closed. (It will be hidden by bent leg.) Visit Mimidolls.Com for a free video tutorial on how to Ladder Stitch.

Gather head opening closed after stuffing.

Bent Leg

Slash leg along dotted line on the back side only.

Put a line of **Grrrip** glue around opening to prevent it from fraying or enlarging.

Fold a pipe cleaner in half. Bend goes into toe. Stuff around pipe cleaner keeping it in the center

Ladder stitch opening closed. (It will be hidden against torso.) Visit Mimidolls.Com for a free video tutorial on how to Ladder Stitch.

Arms

Fold 1" of pipe cleaner and put into arm with the fold in the hand. Cut off any excess.

Stuff keeping pipe cleaner in center.

Assembly

Ladder stitch arms to torso where indicated.

Ladder stitch bent leg to torso where indicated.

Stitch large safety pin to back of torso with opening below neck.

See photos for some ideas on embellishment.

Visit Mimidolls.Com
for free video tutorials
on all aspects of cloth
doll making.